



# FESTIVAL ARENA

## RIGGING ORDER FORM 2021 / 2022



**INDEIN**  
MEDIA AND EVENTS





## ARENA RIGGING AND STRUCTURE DETAILS



### OVERALL GRID WEIGHTLOAD

#### MAIN ARENA

Festival Arena's main hall structure is constructed of 21 structural cross frames

Maximum Load Capacity – 3200 kgs per frame

#### PRE FUNCTION / SMALLER ARENA

Pre Function hall structure is constructed of 4 structural cross frames

Maximum Load Capacity – 1200 kgs per frame

### POINT WEIGHTLOAD

#### **The Main Hall: 100m x 50m: Maximum Loading per beam (As per structure manufacturers guides):**

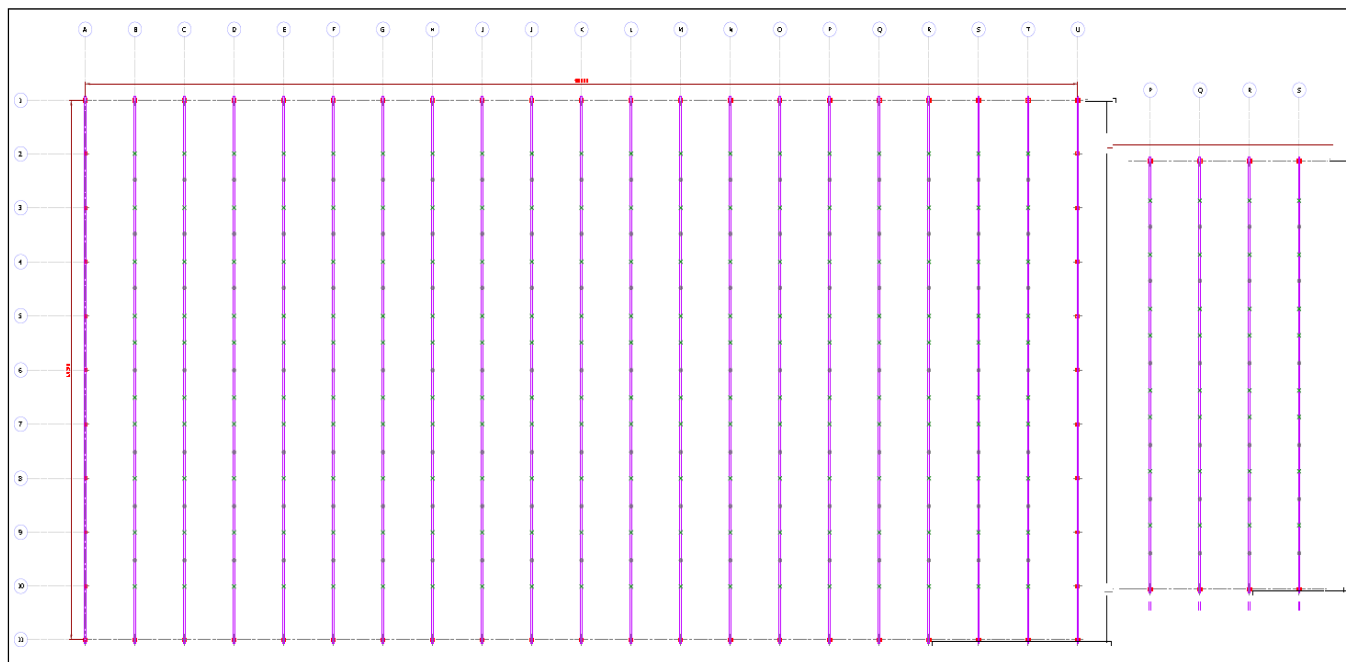
- Symmetrical rigging: same load apply left and right of apex with 10% tolerance =, Maximum 3.5tn / portal with maximum point load of 750kg.
- Non- Symmetrical rigging: 60%-40% = Maximum 3tn / portal with maximum point load of 750kg.
- Non symmetrical rigging: 75%-25% = Maximum 2.5tn / portal with maximum point load of 500kg.
- Point load must always apply at vertical nodes: where vertical bracing meets bottom chord of the truss

#### **Pre Function Hall: 40 m x 25 m: Maximum Loading per beam (As per structure manufacturers guides):**

- Symmetrical rigging (same loads apply left and right of apex with 10% tolerance) = Maximum 1.5tn / portal with max point load of 400kg.
- Non symmetrical rigging: 60%-40% = Maximum 1T / portal with maximum point load of 400kg.
- Non symmetrical rigging: 75%-25% = NOT ALLOWED
- Point loads must always apply at vertical nodes: where vertical bracing meets bottom chord of the truss



## STRUCTURE GRID



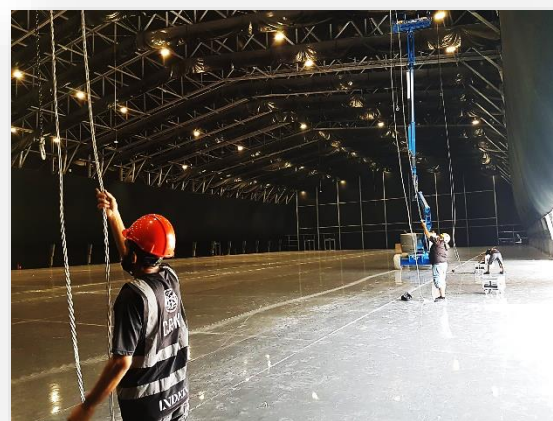
## Conditions of Orders

### Health & Safety

- INDEIN ME are not liable for secondary rigging or electrical installations if installed by Third Party contractors.
- Valid certificate of hoist inspection must be provided for installation of hoists supplied by Third Party contractor.
- Any structure requiring more than 4 hoists for a single lift must use electric chain-hoists

### Payment

- Orders must be submitted in 10 days prior to start of tenancy. Surcharge will apply to last minute orders
- All rates are excluding 5% VAT fee
- All orders must be paid in full at time of ordering.
- This form will be treated as a Purchase Order, and will be responded with our Invoice based on your order.
- All payments must be fully made prior to commencement of work



### Submission

Please send the filled form to INDEIN ME on following contact details: - [Contact@indeinme.com](mailto:Contact@indeinme.com)

Reference - Stallone Gomes Email: Stallone@indein.com Contact. +971 55 635 2100 / +971 55 638 2100



## ORDER FORM & DETAILS

### GENERAL INFORMATION

<b>Event Name</b>		<b>Event Date</b>	
<b>Client/Stand Name</b>		<b>Contact Name</b>	
<b>Contact Number</b>		<b>Contact Email</b>	

### RIGGING POINTS ORDER RATES

Description	Standard Rate		On- Site Order Rate		Total
	Unit Price	No. of units	Unit Price	No. of units	
<b>Direct Roof Points:</b> Rigged points installed on existing structure	AED 650		AED 850		
<b>In-Direct Roof Points:</b> Rigged points installed on other than existing structure	AED 1,250		AED 1,450		

### RIGGING POINT ORDER CONDITIONS

- Rigging order must be submitted with clear & precise rigging plan at the time of ordering, both in pdf and dwg formats
- Rigging plan must show location of each rigging point in relation to structure and display metric measurements.
- Exact weight per rigging point must be detailed in kg in addition to total weight in kg per load and per beam.

### RIGGING EQUIPMENT ORDER DETAILS

Description	Standard Rate	Number of Units	Total
1 Ton Motor (With Installation)	AED 800		
1 Ton Chain Block (With Installation)	AED 300		
Light Duty Truss (Prolite H30V)	POA		

### EXTERNAL RIGGING EQUIPMENT CONDITIONS

- All required equipment is subject to availability and prior confirmation.
- Secondary rigging/ Trusses: subject to availability and prices available upon request.
- All Motors, chain blocks & controllers must be guaranteed certified and in safe working condition, they must have a valid test certificate where applicable.
- Hirer is responsible for safe operations and offloading of the provided Rigging Equipment. INDEIN ME reserves the right to refuse attachment of unsafe or overweight Loads
- Only qualified riggers /operators can drive and operate the motors.

I, the undersigned accept the terms and conditions of rental and production

Signed :

Seal :

Date: